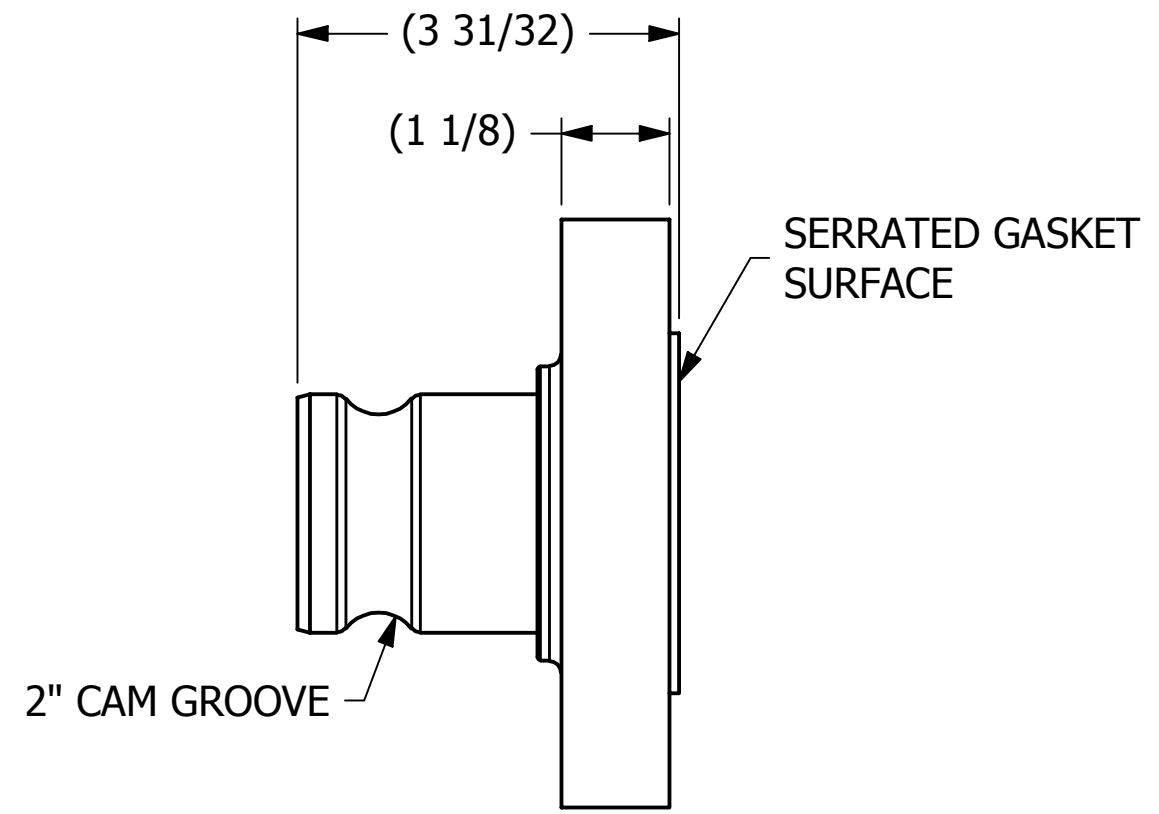
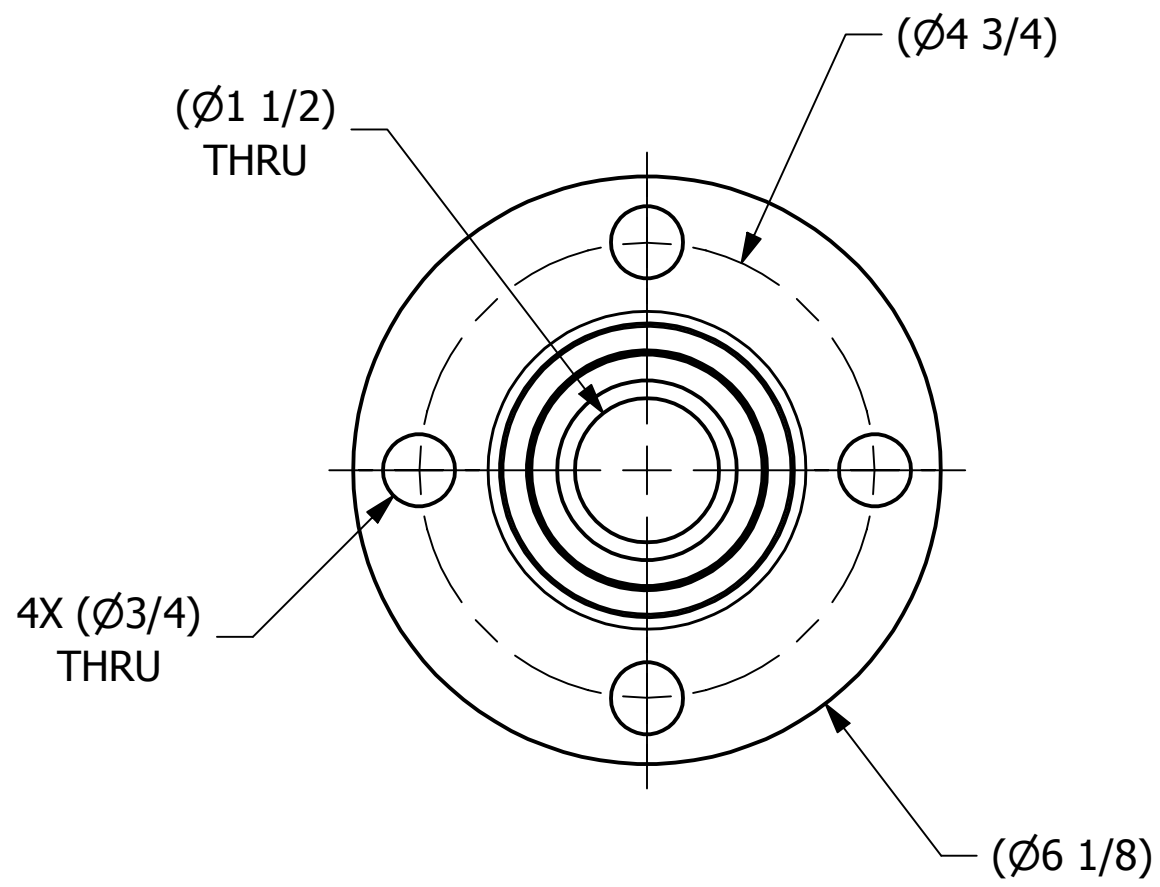


SALES DRAWING

SALES DRAWING



REV	BY	DATE	DESCRIPTION
C	GS	4-8-13	ADDED NOTE, LEADER NOTES, & DIMS. NEW TITLE BLOCK. DIM 3 31/32 WAS 3 15/32
B	ACC	10-22-04	FLANGE WAS HS2FLP2
A	ACC	10-08-04	ADDED PART INTO THE SYSTEM

<small>UNLESS OTHERWISE SPECIFIED DIMENSIONAL TOLERANCES</small> FRACTIONAL: $\pm 1/16$ X.XX: $\pm .03$ X.XXX: $\pm .015$ ANGULAR: $\pm 1^\circ$ <small>DEBURR ALL SHARP EDGES. ALL MACHINED SURFACES TO HAVE A 125 RMS FINISH UNLESS NOTED OTHERWISE.</small>	DRAWN BY:	ACC
	CHECKED BY:	
	PROTOTYPE BY:	ACC
	PROTOTYPE DATE:	10/8/2004
	APPROVED FOR PRODUCTION BY:	ACC
THIRD ANGLE PROJECTION	PRODUCTION DATE:	10/8/2004

<b>SALCO PRODUCTS, INC.</b>		
PART NAME: <b>FLANGED ADAPTER 2" 150 LB</b>		
MATERIAL: <b>SALCO PE</b>		
PROJECT #: <b>030708</b>	SHEET #: <b>1 OF 1</b>	SCALE: <b>1:2</b>
DRAWING #: <b>B18666</b>	PART #: <b>HS2FTKPY</b>	

THIS PRINT, PROPERTY OF SALCO PRODUCTS INC., CONTAINS PROPRIETARY INFORMATION AND MUST NOT BE COPIED, REPRODUCED, OR USED DETRIMENTALLY TO OUR INTEREST.